

[www.myriadsuite.com](http://www.myriadsuite.com)

On-Demand Software  
Ecosystem Presentation



 **MyriadApp**

**XI-Factory™**




**XI-Framework™**

Contact us at: [contact@myriadsuite.com](mailto:contact@myriadsuite.com)

**TABLE OF CONTENT**

MyriadSuite.com.....	3
MyriadApp: On-Demand Business Application.....	4
For small enterprise.....	4
For medium and large enterprise .....	4
Contacts Management.....	5
Web application to manage business cards.....	5
Sales Management and Invoices processing.....	5
Web Application for Calendars Management.....	6
Bidirectional Synchronization between <i>MyriadApp</i> and <i>Outlook/BlackBerry</i> .....	7
Web application for Opportunities Management.....	8
Projects Management.....	9
Web Application for Projects Management.....	9
Ressource Assigation Web Screen.....	10
Assets Management .....	11
Web Application for Products Management.....	11
Help Desk Support.....	12
Web Application for Incidents Management.....	12
Analytics Management .....	13
Web Application for Dashboard Visualization.....	13
Web Application for KPI Management .....	14
Data Management .....	15
Web Application for Pick List Values Management.....	15
System Management.....	16
Web Application of Users Management.....	16
XI-Factory™ et XI-Framework™ .....	17
XI-Factory AJAX Interface .....	18
Example of AJAX/.NET Generic On-Demand Application Generated by XI-Factory .....	19

MyriadSuite.com is a web site offering a new On-Demand Software Ecosystem to support enterprise business processes.

On-Demand Software Ecosystem	
Software	Summary
	<p>Powerful On-Demand Business Applications:</p> <ul style="list-style-type: none"> <li>▪ Highly Integrated and evolutive SaaS Software,               <ul style="list-style-type: none"> <li>○ CRM + Help Desk + Projects + Orders + Services +...</li> </ul> </li> <li>▪ New and unique One Web Page Application design,               <ul style="list-style-type: none"> <li>○ Desktop-like applications over the Web,</li> </ul> </li> <li>▪ Low cost membership.</li> </ul>
	<p>On-Demand Tool to Quickly Design, Validate, and Generate New On-Demand Applications:</p> <ul style="list-style-type: none"> <li>▪ New applications can be added to MyriadApp to complete enterprise business needs.</li> <li>▪ Become a MyriadApp Solution Provider</li> </ul>
	<p>On-Demand Application Development Framework:</p> <ul style="list-style-type: none"> <li>▪ Complete set of OWPA/AJAX/.NET components to accelerate application development.</li> </ul>

MyriadSuite.com is developing successful partnerships with major service and hosting companies to insure the result for your enterprise.

**What is an On-Demand Software Ecosystem?**

- It's a set of pre-integrated software accessed by web services that accelerate the deployment and development of new software functions required by the adaptive enterprise.

MyriadSuite.com offers on-demand software with the following advantages:

- Low-cost membership and service level agreements,
- No costly software and IT infrastructure to buy,
- Quick account set up and configuration,
- As powerful as your desktop software,
- Can grow with your business needs,
- Very powerful Web and database servers with high bandwidth availability,
- World-Class data centers with high security level and regular backups.

### MyriadApp: On-Demand Business Application

MyriadApp currently offers more than 50 web applications to support the following business processes:

1. Contacts management,
2. Sales management,
3. Orders and invoices processing,
4. Projects management,
5. Products and equipments management,
6. Help desk management,
7. Analytics management,
8. Data management,
9. System management.

With MyriadApp, you can integrate, under a single on-demand software and database, several of your business processes and thus generate very important productivity gains.

**Important note:** For a complete description off all MyriadApp business functions, please refer to the [How to use MyriadApp?](#) link on the [www.myriadsuite.com](http://www.myriadsuite.com) main page.

### For small enterprise

Securely manage your services with complete on-demand software in exchange of a low monthly membership fee.

- Your critical business data is securely stored on powerful servers in safe bunkers and thus protected against stolen computers and fire destroying your all of your customer records.

### For medium and large enterprise

MyriadApp is not expensive monolithic software but rather a suite of flexible web applications, which are used accordingly to your business needs only.

MyriadApp supports 16 user roles to cover all of its business functions.

MyriadApp can be integrated with your internal systems like your ERP (SAP, JDEdwards,...) in order to provide complementary business functions at a fraction of the expenses.

But especially, MyriadApp can evolve according to your business needs with the help of our XI-Factory<sup>™</sup> et XI-Framework<sup>™</sup> productivity software which considerably reduce web application development time and costs.

## Contacts Management

Manage all types of **Accounts**, **People** and **Business Cards**.

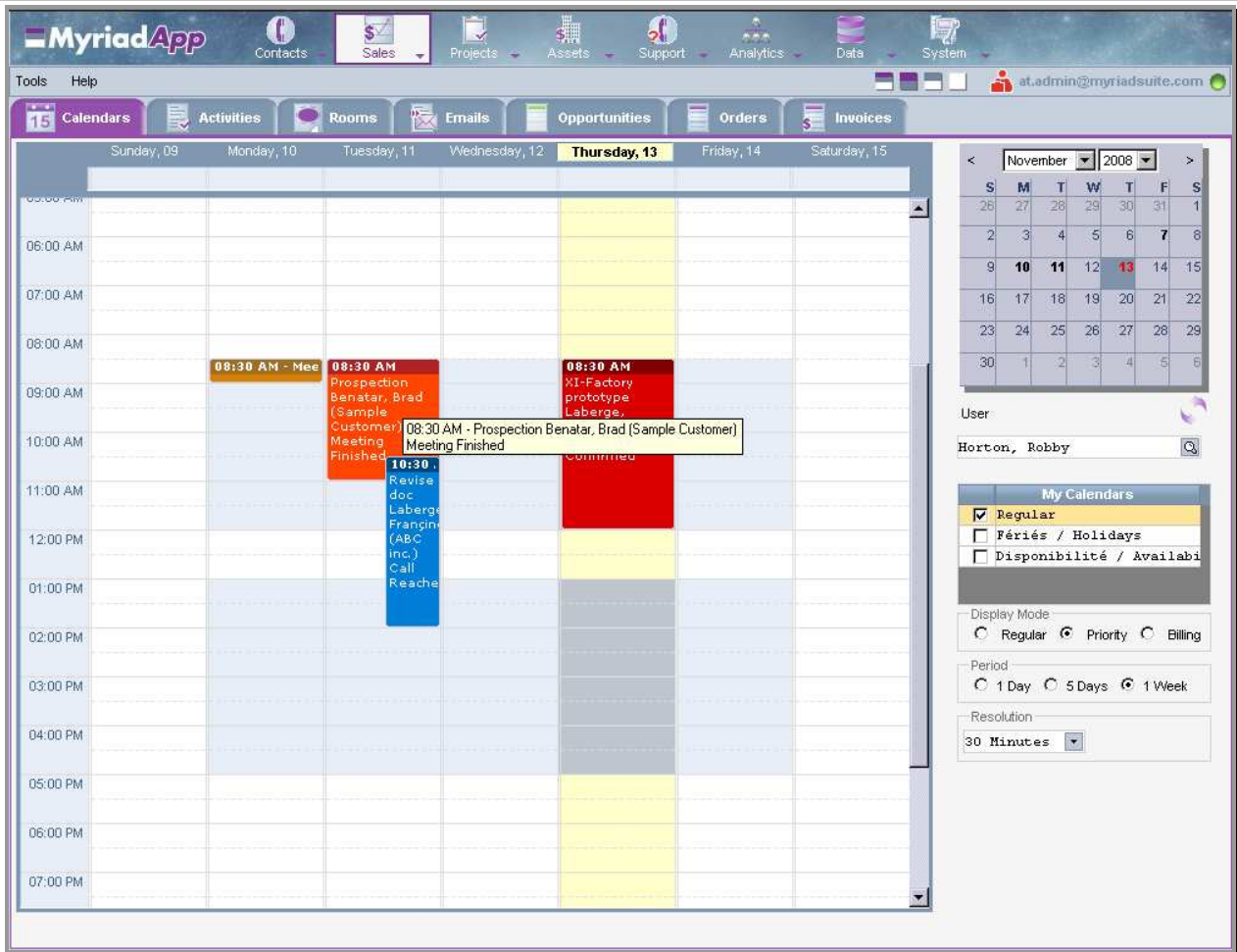
### Web application to manage business cards

- From the business card, sales representatives can quickly create new contacts, new prospective activities, and evaluate their chances of success and create, when the time is right, new meaningful business opportunities helping to maintain an accurate sales pipeline.
- Use People and Accounts web applications to add additional detailed information about your contacts and their enterprises.

## Sales Management and Invoices processing

Your sales process is supported by several web applications: **Calendars**, **Activities**, **Rooms**, **Emails**, **Opportunities**, **Orders**, and **Invoices** management.

**Web Application for Calendars Management**



Manage your professional services as for examples: customer meetings, patient appointments, company meetings, calls to be made... And you can quickly invoice your professional services from calendar activities (e.g.: patient appointments with consultations and treatments).

MyriadApp calendar activity can be exported to sales rep Outlook software and BlackBerry. On the road, they can return customer order items in MyriadApp database to quickly generate new orders.

You can also add employee work schedule to define their time period availabilities. Employees' availabilities are reused by the Projects web application when assigning resources to tasks.

### Bidirectional Synchronization between *MyriadApp* and *Outlook/BlackBerry*

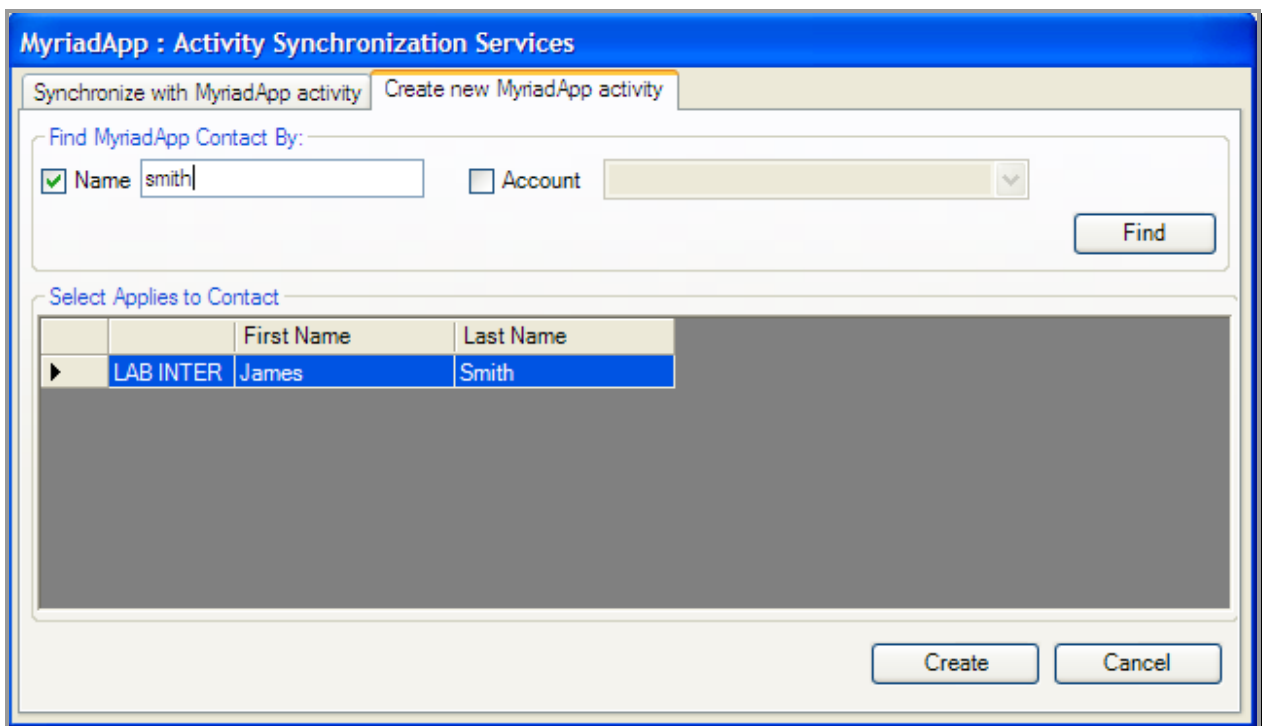
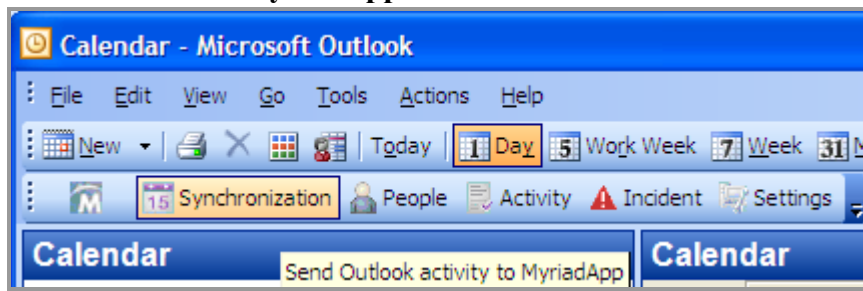
From MyriadApp, send customer appointments to sales reps **Outlook/BlackBerry**.

Into an Outlook calendar activity, a sales rep can add customer order items and securely return the information via Internet in MyriadApp database.

Your order manager receives it and uses it to quickly generate a new order.

You can also attach Outlook emails to MyriadApp contacts, activities and incidents.

#### MyriadApp's Outlook Addin



Web application for Opportunities Management

**Search By** **Advanced**

Responsible: Horton, Robby  People:  Updated Since:

Account:   Keyword:   Updated Date:

Contact Name:   Number:

**Results - 7 opportunity(ies)...**

R	ID	Name	Applies to	Number	Status	Date	Total
●	Web Applications	Nice Customer	00007	Qualification	2008-11-06	52,593.75 CAD	
●	ERP Project2	Nice Customer	00006	Order created	2008-10-31	1,612,125.00 CAD	
●	Customer project	XRT inc.	00005	Order created	2008-10-29	115,250.00 CAD	
●	SM Project	XRT inc.	00004	Needs Analysis	2008-10-27	238,966.25 CAD	
●	Product Development	Smith John	00003	Proposal	2008-09-10	25,312.50 CAD	
●	Your New project opp	Sample Customer	00002	Qualification	2008-07-23	54,912.50 CAD	

Type	Item Description	Quantity	Price	Per	U	Adjust. %	Reason Adjust.	Adjust.	Sub Total
New Project	ERP Project	1	1,500,000.00	1.00	P	-5	Courtesy Credit	-75,000.00	1,425,000.00
Product	YourProduct (YP)	1.00	5,000.00	1.00	U	0.000		0.00	5,000.00
Task	YourTask	1.00	3,000.00	1.00	U	0.000		0.00	3,000.00

Adjustment	Discount	Surcharge	Sub Total	Tax 1	Tax 2	Total
-75,000.00	0.00	0.00	1,433,000.00	71,650.00	107,475.00	1,612,125.00

**Item Details**

Project: **From** 2008-10-31... **To** 2009-10-31... **Name** ERP Project

**Taxation Information**  
Country: Canada  
Province / State: Ontario  
Rule Type: Regular

**Commission**  
 %: 2.00  
 Amount:   
Total: 30,000.00

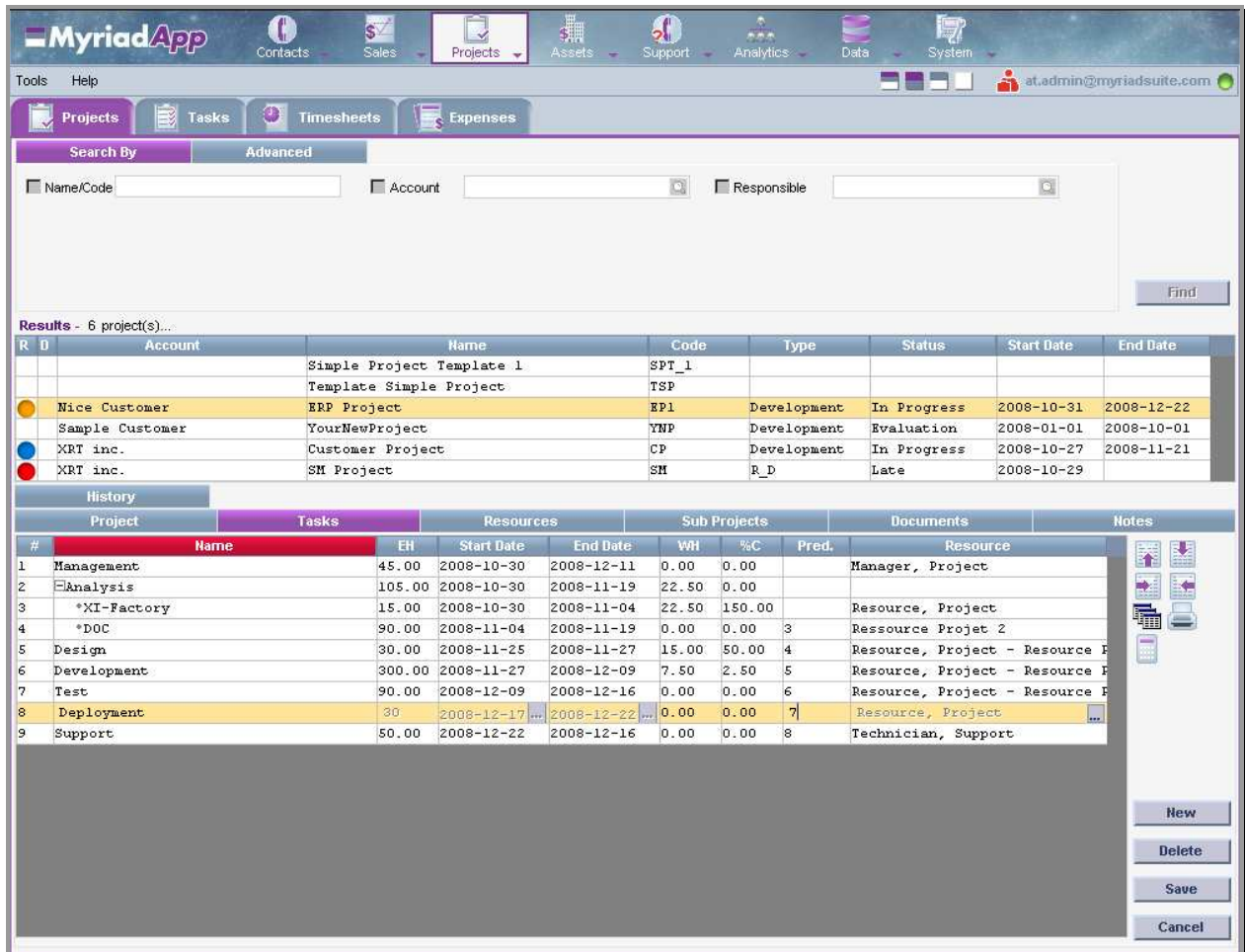
Buttons: New, Delete, Modify, Save, Cancel

- Manage your sales pipeline.
- Manage your sales opportunities with service and/or product items with taxes, discounts, surcharges, adjustments, comments and sales rep commissions.
- View Analytics sections to see sales rep and overall company opportunity results.

## Projects Management

Management of **Projects, Tasks, Timesheets** and **Expense** accounts.

### Web Application for Projects Management



**Results - 6 project(s)...**

R	ID	Account	Name	Code	Type	Status	Start Date	End Date
			Simple Project Template 1	SPT_1				
			Template Simple Project	TSP				
		Nice Customer	ERP Project	EP1	Development	In Progress	2008-10-31	2008-12-22
		Sample Customer	YourNewProject	YNP	Development	Evaluation	2008-01-01	2008-10-01
		XRT inc.	Customer Project	CP	Development	In Progress	2008-10-27	2008-11-21
		XRT inc.	SM Project	SM	R_D	Late	2008-10-29	

Project		Tasks	Resources		Sub Projects		Documents	Notes
#	Name	EH	Start Date	End Date	WH	%C	Pred.	Resource
1	Management	45.00	2008-10-30	2008-12-11	0.00	0.00		Manager, Project
2	Analysis	105.00	2008-10-30	2008-11-19	22.50	0.00		
3	*XI-Factory	15.00	2008-10-30	2008-11-04	22.50	150.00		Resource, Project
4	*DOC	90.00	2008-11-04	2008-11-19	0.00	0.00	3	Ressource Projet 2
5	Design	30.00	2008-11-25	2008-11-27	15.00	50.00	4	Resource, Project - Resource P
6	Development	300.00	2008-11-27	2008-12-09	7.50	2.50	5	Resource, Project - Resource P
7	Test	90.00	2008-12-09	2008-12-16	0.00	0.00	6	Resource, Project - Resource P
8	Deployment	30	2008-12-17	2008-12-22	0.00	0.00	7	Resource, Project
9	Support	50.00	2008-12-22	2008-12-16	0.00	0.00	8	Technician, Support

- Use a powerful, hierarchical, and editable web grid in order to create project tasks.
- Quickly assign resources to tasks while taking account of their work schedule availabilities.
- Evaluate project progression with resources timesheets.

**Ressource Assignment Web Screen**

MyriadApp : Assign Resources

Availability      Extended

**Number of Hours** 15.00

**Start Date** 2008-12-29 ... End Date ...

**Hours Per Day** ...

Resource Name	Availability
Kovaleva, Alicia	<input checked="" type="checkbox"/>
Resource, Project	<input checked="" type="checkbox"/>

Calculate

Resource(s) Availability

Resource Name	AH	Start Date	End Date
Resource, Project	15	2008-12-29	2008-12-30
Kovaleva, Alicia	11	2009-01-12	2009-01-14

Assign      Dismiss

Task Information

Name ERP PROJECT - Development      Number Of Hours      Start Date      End Date

Assignments

Resource Name	Position	H.Estimated	H. Per Day	Start Date	End Date

Include Assignment

December 2008

S	M	T	W	T	F	S
30	1	2	3	4	5	6
7	8	9	10	11	12	13
14	15	16	17	18	19	20
21	22	23	24	25	26	27
28	29	30	31	1	2	3
4	5	6	7	8	9	10

- o Excel report showing under and over resource assignments for all active projects:

UnderAssignment/OverAssignment By Resources By Day

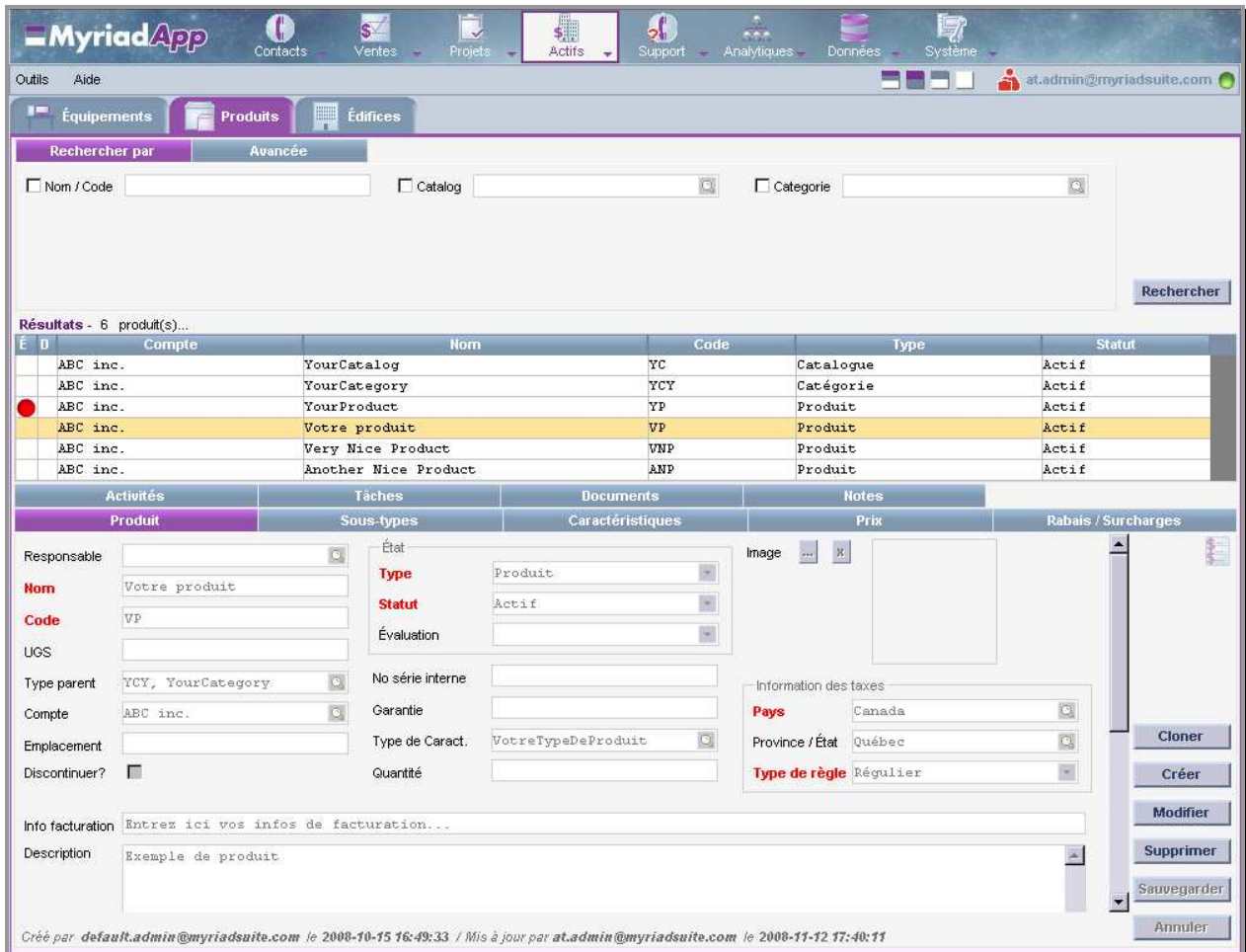
Page 1 of 1  
Report Date : 2008-11-11

			(YYYY)													
			(MONTH)													
Resource, Project	EP1, ERP Project	XI-Factory	2	3	4	5	6	7	8	9	10	11	12	13	14	
Resource, Project	EP1, ERP Project	Development	0*	7.5*	7.5*	0*	0*	0*	0*	0*	0*	0*	0*	0*	0*	
		Design	0*	0*	0*	7.5*	7.5*	0*	0*	0*	0*	0*	0*	0*	0*	
		Sub Total	0	7.5	7.5	7.5	7.5	7.5	0	0	0	7.5	7.5	7.5	7.5	7.5
Sub Total			0	7.5	7.5	7.5	7.5	7.5	0	0	7.5	7.5	7.5	7.5	7.5	
Technician, Support	Sub Total		0	0	0	0	0	0	0	0	0	0	0	0	0	
	Sub Total		0	7.5	7.5	7.5	7.5	7.5	0	0	7.5	7.5	7.5	7.5	7.5	
Manager, Project	CP, Customer Project	Management	0*	0*	0*	2.5*	0*	0*	0*	0*	0*	0*	0*	0*	0*	
		DOC	0*	0*	0*	5*	0*	0*	0*	0*	0*	0*	0*	0*	0*	
	Sub Total		0	0	0	7.5	0	0	0	0	0	0	0	0	0	
	EP1, ERP Project	Management	0	0	0	0	0	0	0	0	0	1.5	1.5	1.5	1.5	1.5
Sub Total		0	0	0	0	0	0	0	0	0	1.5	1.5	1.5	1.5	1.5	
Sub Total			0	7.5	7.5	7.5	7.5	7.5	0	0	1.5	1.5	1.5	1.5	1.5	
Resource Proj 1	EP1, ERP Project	Development					7.5	7.5	0	0	7.5	7.5	7.5	7.5	7.5	
		Design														
	Sub Total		0	0	0	0	7.5	7.5	0	0	7.5	7.5	7.5	7.5	7.5	
Sub Total			0	7.5	7.5	7.5	7.5	0	0	7.5	7.5	7.5	7.5	7.5		
Ressource Proj 2	EP1, ERP Project	DOC			7.5	7.5	7.5	7.5	0	0	7.5	7.5	7.5	7.5	7.5	
		Development														
	Sub Total		0	0	7.5	7.5	7.5	7.5	0	0	7.5	7.5	7.5	7.5	7.5	
Sub Total			0	7.5	7.5	7.5	7.5	0	0	7.5	7.5	7.5	7.5	7.5		

## Assets Management

For the management of your **Equipments, Products, and Buildings** inventory.

### Web Application for Products Management



É	D	Compte	Nom	Code	Type	Statut
		ABC inc.	YourCatalog	YC	Catalogue	Actif
		ABC inc.	YourCategory	YCY	Catégorie	Actif
		ABC inc.	YourProduct	YP	Produit	Actif
		ABC inc.	Votre produit	VP	Produit	Actif
		ABC inc.	Very Nice Product	VNP	Produit	Actif
		ABC inc.	Another Nice Product	ANP	Produit	Actif

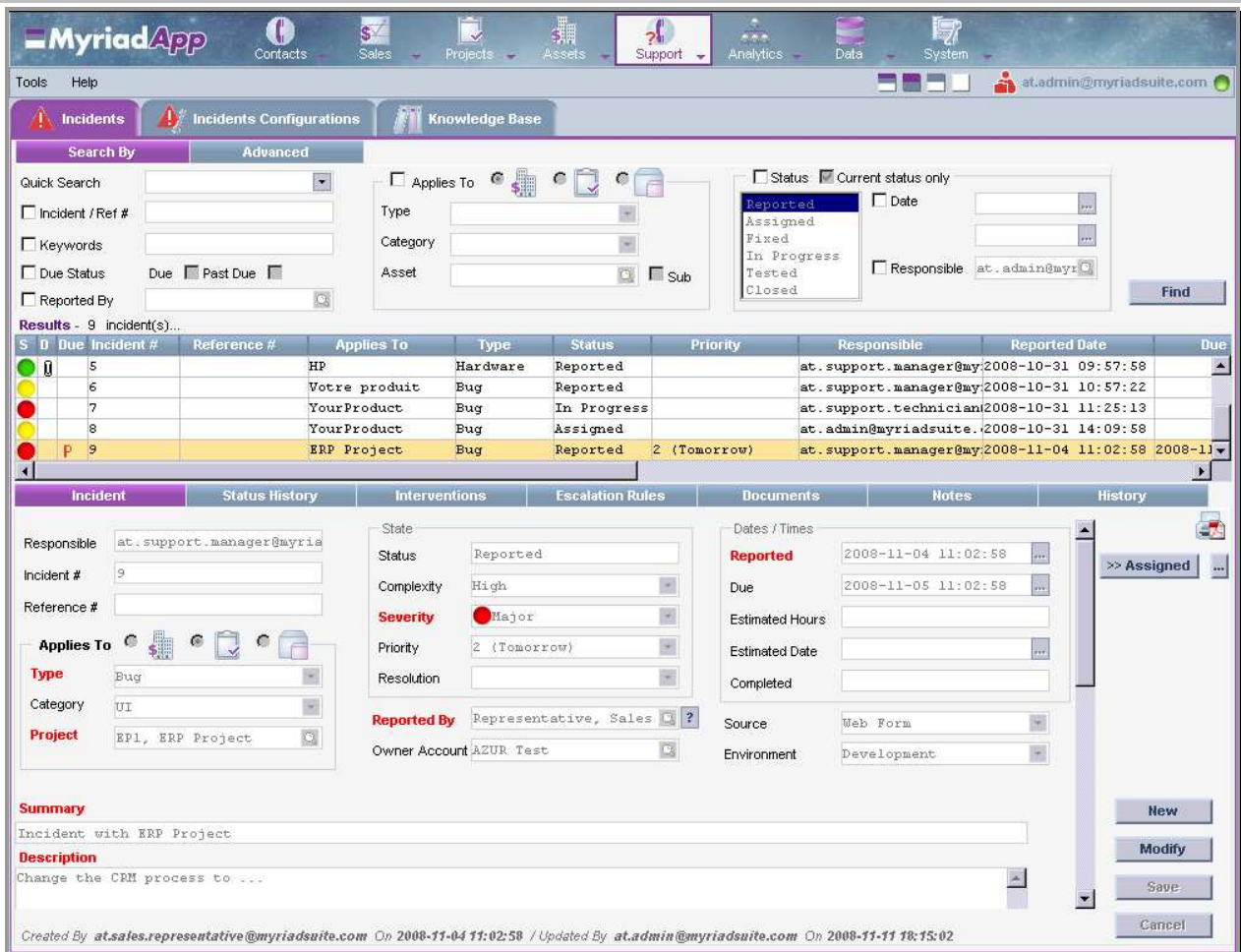
- Manage your product categories and catalogs.
- Manage product characteristics with price, discount, and surcharge rules.

## Help Desk Support

Your help desk can be supported by Web applications for the management of **Incidents**, incident status **Configurations** and **Knowledge base**.

Essential to remotely manage one or more support centers of your company and its divisions.

## Web Application for Incidents Management



S	D	Due	Incident #	Reference #	Applies To	Type	Status	Priority	Responsible	Reported Date	Due
			5		HP	Hardware	Reported		at.support.manager@my	2008-10-31 09:57:58	
			6		Votre produit	Bug	Reported		at.support.manager@my	2008-10-31 10:57:22	
			7		YourProduct	Bug	In Progress		at.support.technician@my	2008-10-31 11:25:13	
			8		YourProduct	Bug	Assigned		at.admin@myriadsuite.	2008-10-31 14:09:58	
			9		ERP Project	Bug	Reported	2 (Tomorrow)	at.support.manager@my	2008-11-04 11:02:58	2008-11-05 11:02:58

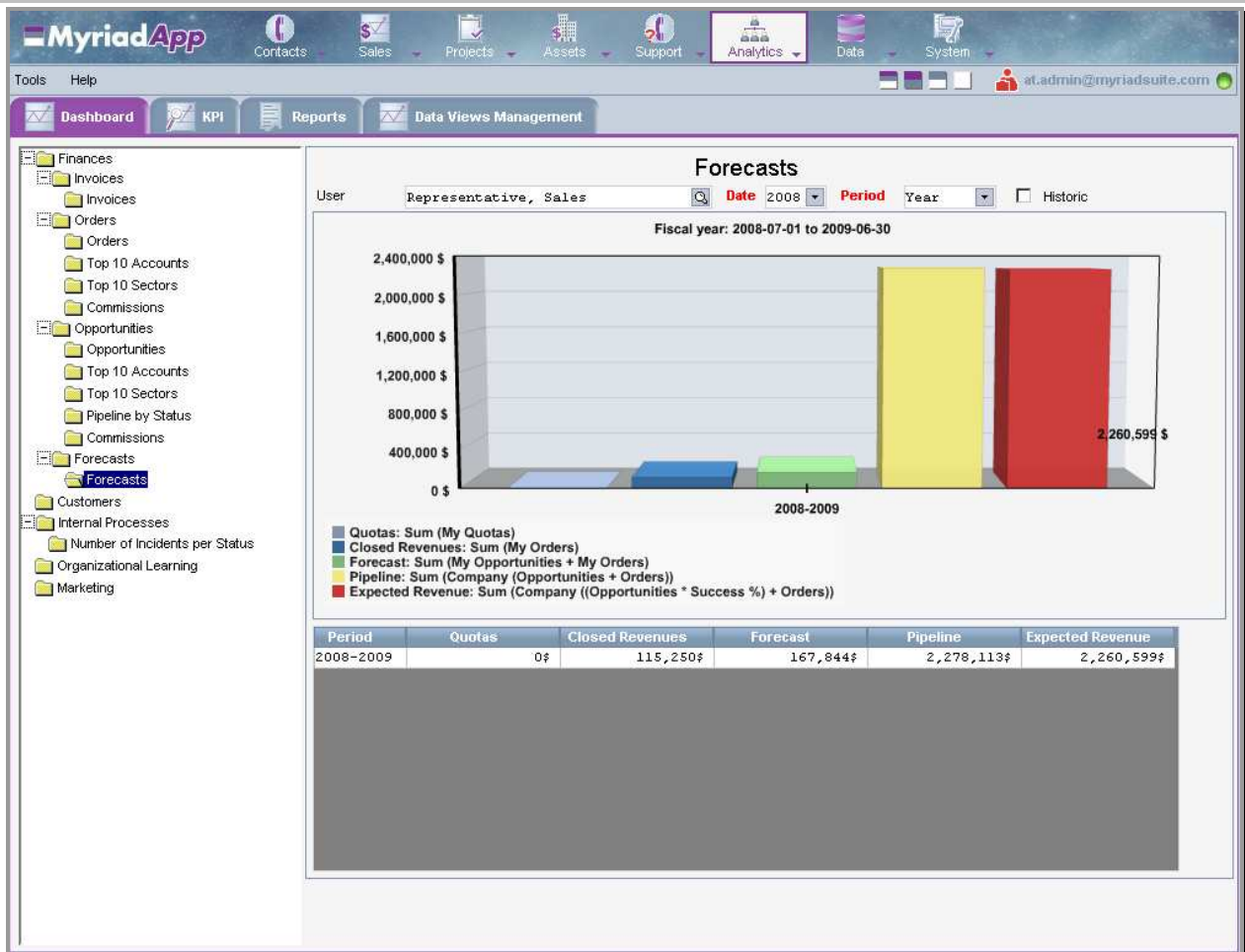
- New incidents about your equipments, products, or projects can be created from a Web form used by your employees and your customers, or more directly by support personnel from the Incidents management application as shown above.
- Once an incident is created, a resolution process is started with automatic incident assignment to technical resources, incident escalation rules, and with interventions information.
- The MyriadApp Outlook Addin makes it possible to quickly join an email to an incident.

## Analytics Management

For the visualization of your **Dashboard**, **Key Performance Indicators**, and **Reports**.

The **Data Views Management** application is used to manage any type of analytics to be quickly adapted to your enterprise needs.

## Web Application for Dashboard Visualization



- The managers and the authorized personnel can quickly visualize their own dashboard and overall company dashboard.

**Web Application for KPI Management**

**MyriadApp** Contacts Sales Projects Assets Support Analytics Data System

Tools Help at.admin@myriadsuite.com

Dashboard KPI Reports Data Views Management

**KPI List** Status: Active

Start Date: 2008-07-01 End Date: 2009-06-30

30  
20  
10  
0

Oct 2008 Nov 2008

By Month High Alarm value Low Alarm value Target Value

**Periodic Entries**

Period	Period Start	Period End	Value	Target
Oct 2008	2008-10-01	2008-10-31	2.000	10.000
Nov 2008	2008-11-01	2008-11-30	4.000	10.000

Refresh Clone New Modify Delete Save Cancel

Period Start: 2008-10-01 High Alarm: 20.000  
 Period End: 2008-10-31 Value: 2.000  
 Period: Oct 2008 Low Alarm: 0.000 Target: 10.000

Created By system On 2008-10-15 / Updated By system On 2008-10-31

- The managers and the authorized personnel can quickly visualize their own KPI and overall company KPI.



**System Management**

For the management of **Users, Company Configuration, Taxes, Job Positions, Expense Items and Characteristics.**

**Web Application of Users Management**

The screenshot displays the MyriadApp interface for user management. At the top, there is a navigation bar with icons for Contacts, Sales, Projects, Assets, Support, Analytics, Data, and System. Below this is a secondary navigation bar with tabs for Users, Company Config., Taxes, Job Positions, Expense Items, and Characteristics. The 'Users' tab is active, showing a search section with fields for 'User Name (Email)' and 'Status'. Below the search is a table of results for 16 users. The table has columns for Full Name, User Name (Email), and Status. The user 'at.order.manager@myriadsuite.com' is highlighted. Below the table is a detailed view for the selected user, including fields for User Name (Email), Status, Password, Password Confirmation, and Description. There is also a section for linking the user name to People, with options for Existing and New, and fields for Account, People, Last name, and First name. At the bottom right, there are buttons for New, Modify, Delete, Save, and Cancel. A footer note indicates the user was created by at.userazur@myriadsuite.com on 2008-12-12 10:01:21 and updated by at.order.manager@myriadsuite.com on 2008-12-15 15:25:13.

Full Name	User Name (Email)	Status
Management, High	at.high.management@myriadsuite.com	Active
Agent, Marketing	at.marketing.agent@myriadsuite.com	Active
Manager, Marketing	at.marketing.manager@myriadsuite.com	Active
Assistant, Order	at.order.assistant@myriadsuite.com	Active
Manager, Order	at.order.manager@myriadsuite.com	Active
Manager, Project	at.project.manager@myriadsuite.com	Active

- Your MyriadApp administrator can manage your users and assign them to most appropriate MyriadApp business groups.

## **XI-Factory™ et XI-Framework™**

### **On-Demand Development Tools and Platform**

**XI-Factory™** is a unique **Online Software Factory** designed for new generation web application modeling, quick prototyping, and code generation.

XI-Factory brings analysts, architects and business users together and helps them design, like never before, innovative on-demand data management applications.

XI-Factory relies on the **XI-Framework™** development platform to provide full N-Tier code generation capabilities. XI-Framework is based on our very efficient One Web Page Application (OWPA) design pattern advantages:

- Maximizes reuse of central web page
- Avoids repetitive web page refreshes
- Avoids use of pop-up windows
- Reproduces desktop application high levels of performance and sophistication

The XI-Framework is a set of **OWPA - AJAX - .NET** technologies that power MyriadSuite's own MyriadApp made available to developers through a powerful set of component APIs. Developers can use it to create new applications that extend the capabilities of MyriadApp as well as those that address entirely different types of business needs.

### **How does it work?**

Based on ground breaking technologies and industry standards such as .NET, HTML, JavaScript and XML; XI-Factory relies on a new **Software Fabrication Process (SFP)** to let you do the following online steps:

- Design data management application model
- Generate and try application prototypes
- Validate application prototypes with business users
- Define application business rules
- Get a project Go/No Go decision from management
- Generate the application code
- Buy at a very low cost and download the generated code for your developers

### **What you get when you buy the code?**

Complete and working code, under N-Tier architecture, of your web application prototypes comprising:

- Presentation tier with OWPA - AJAX code
- Application tier with VB.NET or C# code

- Data tier with SQLServer, Oracle or MySql database tables and stored procedures

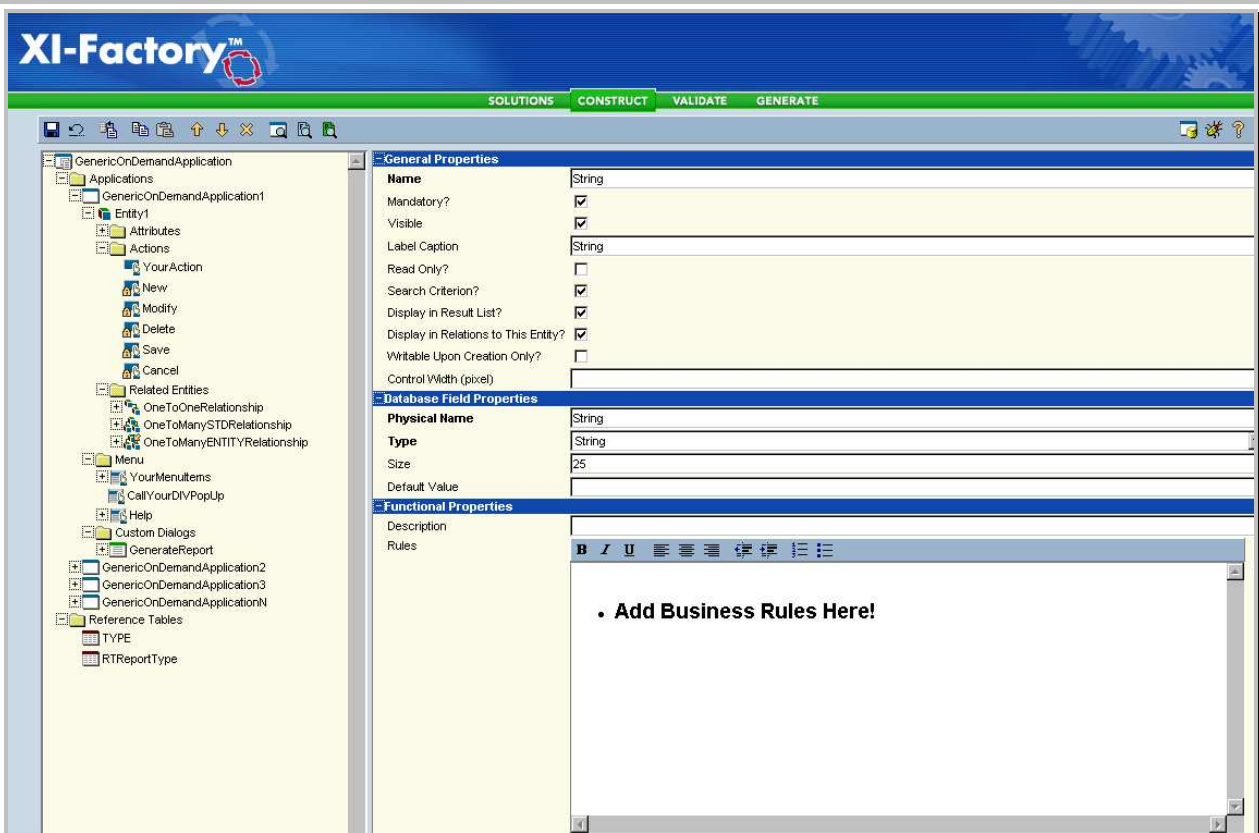
Developer will be able, within MS Visual Studio, to quickly compile applications and program specific business rules and system integrations.

This optimized process avoids excessive costs and delays and helps jumpstart development phase from working web applications without starting from scratch.

### Powerful Business Process Integration System

**MyriadApp** and **XI-Factory™** are working together as a very powerful business process integration system. By combining both web software, we are able to provide a highly flexible solution to integrate most of your administrative and operational business processes under a uniform set of web applications, web services, business rules, and database services. This high level of seamless integration can generate great benefits for your enterprise.

### XI-Factory AJAX Interface



- Design, Test, and Generate Online your own AJAX/.NET Applications within minutes!
- Register at [www.xifactory.com](http://www.xifactory.com). It's FREE!

**Example of AJAX/.NET Generic On-Demand Application Generated by XI-Factory**

The screenshot displays a web application interface with a search bar and a results table. The search bar includes checkboxes for 'String', 'DateTime', 'Combo', and 'LastOne'. The results table shows two rows of data for 'Entity 1' and 'Entity 1a'. Below the table is a 'Properties' form with various input fields and a 'Text' area containing the message 'Attribute Labels are multilingual!'. The interface also includes a 'Find' button and a set of action buttons (YourAction!, New, Modify, Delete, Save, Cancel) on the right side.

String	Combo	Boolean	Currency	Integer	String 1	LastOne
Entity 1	Type A	false	99.99	32767	string!	9999.999
Entity 1a	Type A	false				9999.999

- One Web Page Application (OWPA) design pattern distinctive advantages:
  - Maximizes reuse of central web page,
  - Avoids repetitive web page refreshes,
  - Avoids use of pop-up windows,
  - Reproduces desktop application look and feel with high levels of performance and sophistication.