

MyriadApp

**On-Demand Business
Applications**

How to manage your products



Products Management

TABLE OF CONTENT

How to Manage Product Catalogs and Categories 3
 Go to Products application..... 3
 Manage Catalogs and Categories..... 3
How to Manage Products..... 5
 Go to Products application..... 5
 Manage Products, with their characteristics, prices and discounts 5

How to Manage Product Catalogs and Categories

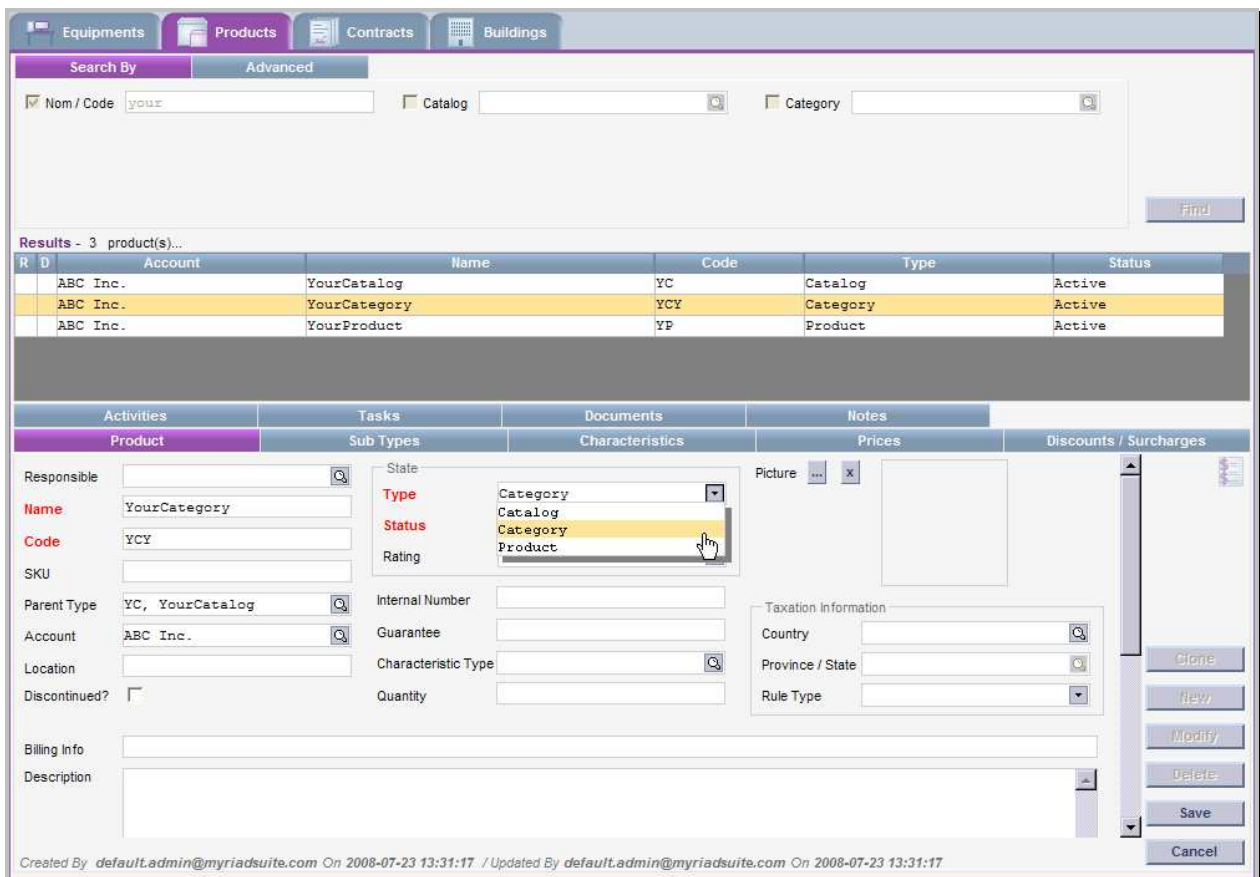
Go to Products application



Description

Select Assets process and then Products application.

Manage Catalogs and Categories



Description

Your products can be classified by catalogs with categories.

In order to define and add a Category or Catalog, use the **New** button and make sure **Type** is set to Category or Catalog.

Make sure you provide all the mandatory fields (in red).

Use the **Save** button when information has been entered.

In order to build the hierarchy “Catalog – Category – Product”, use **Parent Type** field for your Product or Category.

Sub Types tab lets you see the list of children each Catalog or Category has.

How to Manage Products

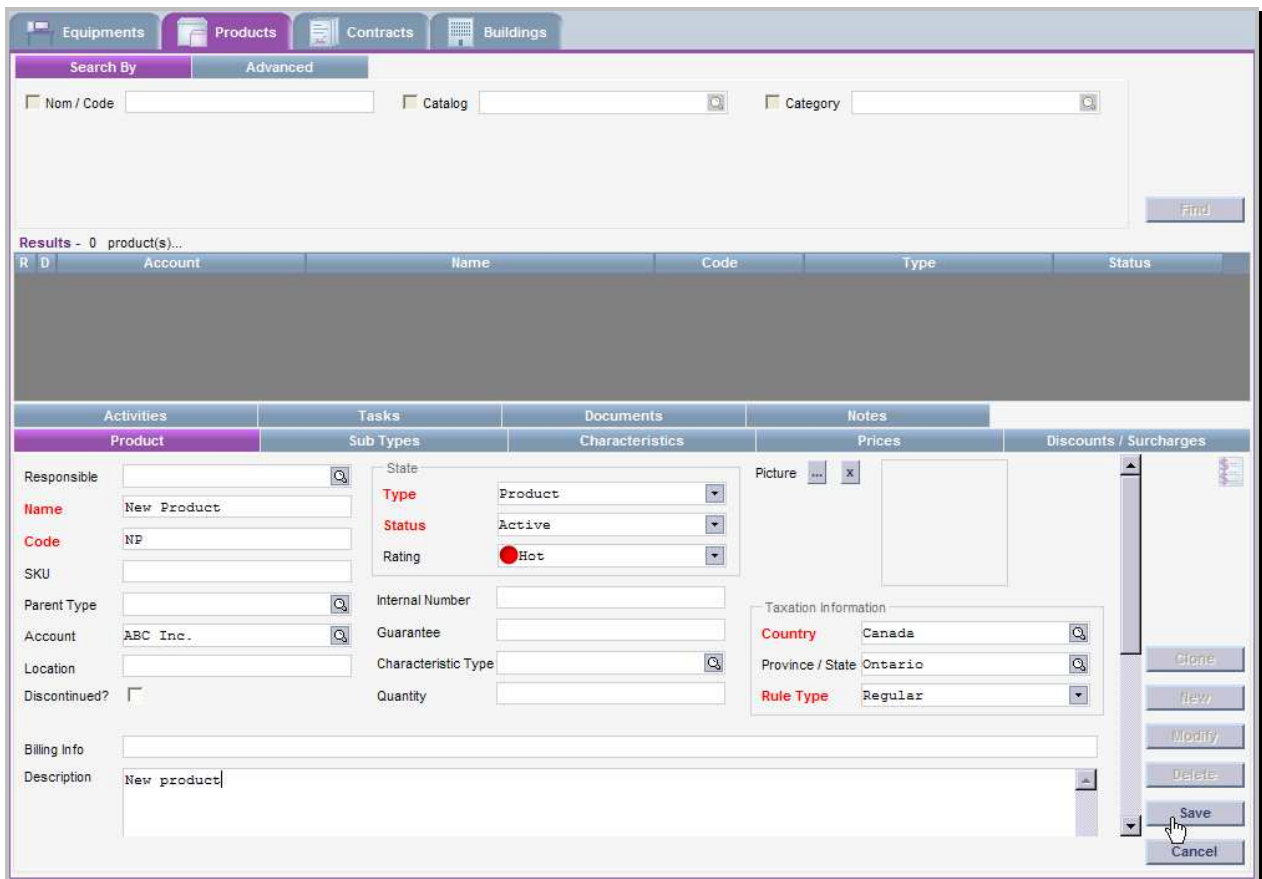
Go to Products application



Description

Select Assets process and then Products application.

Manage Products, with their characteristics, prices and discounts



The screenshot shows the 'Manage Products' form in the MyriadApp. The form is divided into several sections:

- Search By:** Includes fields for 'Nom / Code', 'Catalog', and 'Category', with a 'Find' button.
- Results:** Shows 'Results - 0 product(s)...' and a table with columns: R, D, Account, Name, Code, Type, Status.
- Product Details:**
 - Product:** Name (New Product), Code (NP), SKU, Parent Type, Account (ABC Inc.), Location, Discontinued? (checkbox), Billing info, Description (New product).
 - Sub Types:** State, Type (Product), Status (Active), Rating (Hot).
 - Characteristics:** Internal Number, Guarantee, Characteristic Type, Quantity.
 - Prices:** Picture, Taxation information (Country: Canada, Province / State: Ontario, Rule Type: Regular).
 - Discounts / Surcharges:** (Empty section)
- Actions:** A vertical stack of buttons on the right: Clone, New, Modify, Delete, Save, Cancel.

Description

Use the **New** button to define and add a new Product.

Make sure you provide all the mandatory fields (in red).

Use the **Save** button when information has been entered.

Go to Prices tab.

Activities	Tasks	Documents	Notes
Product	Sub Types	Characteristics	Prices
Effective Date	Quantity	Unit	Price
No Discount?	Max Discount	Max Discount Pct	No Surch.? Max Surch. Max Surch.

Effective Date	2008-01-01	Discount	No Discount Allowed? <input type="checkbox"/>	Surcharge	No Surcharge Allowed? <input type="checkbox"/>
Quantity	1.00	Discount	<input checked="" type="radio"/> Maximum Discount Amount	Surcharge	<input checked="" type="radio"/> Maximum Surcharge Amount
Unit	Unit	Discount	<input type="radio"/> Maximum Discount Pct.	Surcharge	<input type="radio"/> Maximum Surcharge Pct.
Price	1500.00				

Use the **New** button to define and add a new Price for the product.

Make sure you provide all the mandatory fields (in red).

Use the **Save** button when information has been entered.

Go to Discounts/Surcharges tab.

Activities	Tasks	Documents	Notes
Product	Sub Types	Characteristics	Prices
Type	Criteria	Customer	Country
Low Qty	High Qty	%	Amount
From	To		

Type	Discount	Low Quantity	5.00	From Date	2008-07-25
Criteria	Volume	High Quantity	10.00	To Date	2008-12-31
Customer Type	Calendar	Percentage / Amount	<input checked="" type="radio"/> Percentage		
Country	Customer Type		<input type="radio"/> Amount		
State / Province	Geographical Region				
Description	Volume				

Created By default.admin@myriadsuite.com On 2008-07-25 13:35:24 / Updated By default.admin@myriadsuite.com On 2008-07-25 13:35:24

Use the **New** button to define and add a new Surcharge/Discount for the product.

A discount or surcharge can be applied to a specific date range (Calendar), Customer Type,

Geographical Region or Volume.

Make sure you provide all the mandatory fields (in red).

Use the **Save** button when information has been entered.

Go to Characteristics tab.

Activities	Tasks	Documents	Notes	
Product	Sub Types	Characteristics	Prices	Discounts / Surcharges
Certified		<input checked="" type="checkbox"/>		<input type="checkbox"/>

Characteristic Color Modifiable Value

Red

Red

Blue

New
Delete
Modify
Save
Cancel

Use the **New** button to define and add a new Characteristic for the product.

The list of characteristics available depends on **Characteristic Type** selected on Product tab

Select each characteristic that needs to be defined and provide a value.

Use the **Save** button when information has been entered.

Note:

- To manage Characteristic Types, use the System. Characteristics application